

CASE STUDY



After Market Rear Seat Table for Client Nissan

NEAA members FS Design and Amtech Rapid Prototyping have come together to deliver a rear seat table for Nissan Sunderland.



"We have a great working relationship with FS Design and we never look past them when we need any assistance with automotive industrial design."

Ian Judd / Managing Director / Amtech Rapid Prototyping

"FS Design is privileged to work on projects like the picnic tray for Nissan after-market. In the concept phase we consider the manufacturing methods and the supplier base, where we look to engage with North East businesses, such as Amtech. Having the NEAA there to support these activities is also brilliant for us."

Clare Head / Director / FS Design

Background

FS Design Ltd was approached by Nissan to design, test and manufacture a car rear seat table, initially intended for the new Nissan Qashqai, but it became fully transferable to other models.

FS Design Ltd has a long standing successful relationship with Nissan NMUK, NETC Cranfield & Paris; and the Nissan request for a rear seat table was a welcome challenge.

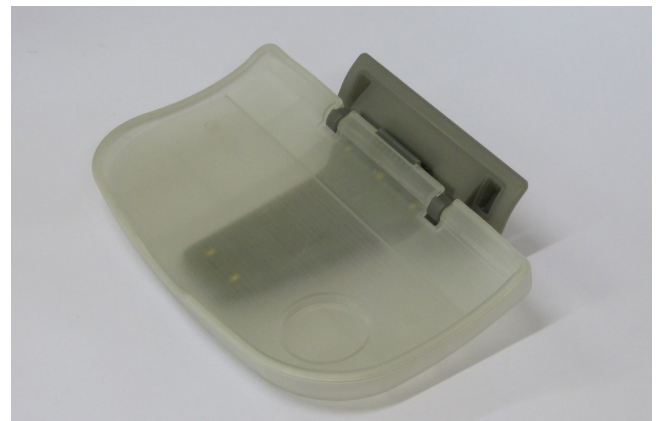
Approach and Solution

In order to move the project forward and ratify the product concept, fellow NEAA member, Amtech Rapid Prototyping, was commissioned to produce an SLA rapid prototype model.

Amtech is based in South Shields in the North East of England with an impressive team of experienced staff and has long been a preferred supplier of FS Design.

Working closely together the two companies produced the table, built in one piece using the very accurate Water Clear Ultra resin, which is excellent for part finishing and can be followed by an application of paint if required.

The hinge bracket was made from LV Grey (DSM Somos) resin, which is strong and durable. It was drilled and tapped with treaded brass inserts which attached the main table.



Outcome and Advantage

- The collaboration enabled the full service delivery from design concept and prototyping to manufacture and delivery.

About Amtech Rapid Prototyping

Amtech Rapid Prototyping's key services include 3D Printing, Vacuum Casting & Forming, Part Finishing and Model Making.

About FS Design

Established in 2002, FS Design Ltd is a highly experienced, creative product design and development consultancy based in Sunderland. It operates in complex, high technology environments with the automotive sector at its core.